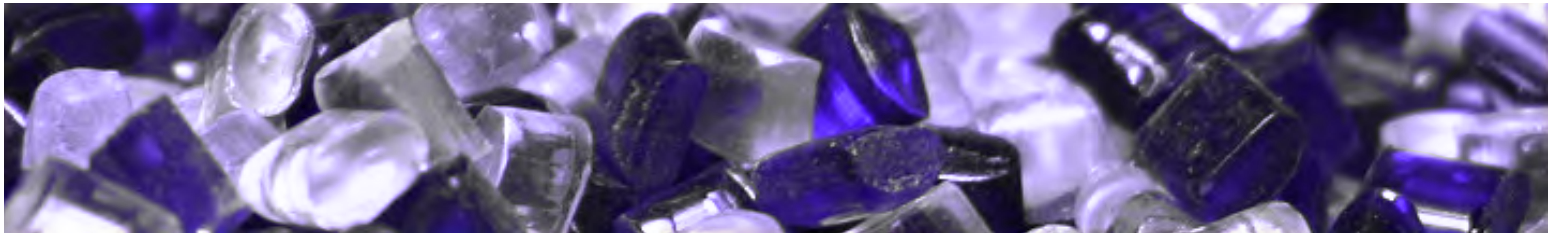


fuchs

Drum blender 30 – 400 litres

MIXOMAT B



SERVOLIFT
Experts in Process, Handling & Design

SERVOLIFT
35 Righter Road
Randolph, NJ 07869
Ph: 973-442-7878 - www.servo-lift.com



// HOUSING



One-sided blender



Double-sided blender

Execution:

- Steel or stainless steel St.1.4301 standard housing
- Shaft with ball-bearing, sealed bearing housing
- With chain transmission
- Stove enamelled in RAL 6017 as a standard
- Standard control unit with analog timer, start and stop switch, main switch and emergency stop push button
- Available as one- or double-sided blender (shaft ends on both sides possible)
- Sizes as follows:

Type	Container [litres]	Max. power [kW]	Max working load [kg]	Art. number steel	Art. number stainless steel
B1	30 - 120	0.55	100	M-B1-0400	M-B1-0450
B2	> 120 - 220	1.5	200	M-B2-0400	M-B2-0450
B3	> 220 - 400	3.0	400	M-B3-0400	M-B3-0450

// CONTAINER HOLDERS

Various standard container holders are available:

BV type container clamp holder



Open BV type container holder



Closed BV type container holder

Robust galvanised or ST.1.4301 glass bead blasted steel construction clamping the container between its bottom and cover. Quick-action clamping fastener for more safety. Customised container holders also available.

MIXOMAT B

// Drum blender 30 – 400 litres

Following containers sizes are available as a standard:

V [litres]	d [mm]	h [mm]	Type	Art. number galvanised	Art. number stainless steel	Required adapter
30 *	300	520	BV 30	M-B-0253	M-B-0254	
50	400	455	BV 50	M-B-0256	M-B-0257	
60 *	400	610	BV 60	M-B-0259	M-B-0260	
90 1) *	475	650	BV 120	M-B-0268	M-B-0269	M-B-1530
100	450	665	BV 100	M-B-0265	M-B-0266	
120 *	500	810	BV 120	M-B-0268	M-B-0269	
150 1)	560	665	BV 200	M-B-0274	M-B-0275	M-B-1586
200	560	870	BV 200	M-B-0274	M-B-0275	
220 *	580	1030	BV 220	M-B-0277	M-B-0278	
300	770	799	BV 300	M-B-0280	M-B-0281	
400	770	997	BV 400	M-B-0283	M-B-0284	

*) plastic container

1) including adapter

- Holder used in most cases, specially with drums of up to 120 litres capacity.
- All containers used must have the same height.
- Smaller containers may also be used thanks to simple adapters.
- Very easy to use BV type holder.

HR type half collar holders



Open HR type holder



Closed HR type holder

Holding of the container by means of two so-called half-collar holders. This robust holder type HR is used mainly with drums of capacities exceeding 120 litres. As opposed to the BV type holder, the HR type holder requires that all drums are of the same diameter. The holder is very easy to use. Safe holding is guaranteed by one quick-action clamping fastener with a special safety locking system preventing any undesired opening of the fastener. Following standard container sizes are available:

V [litres]	d [mm]	h [mm]	Type	Art. number galvanised	Art. number stainless steel
50	400	455	HR 50	M-B-0356	M-B-0357
60 *	400	610	HR 50	M-B-0356	M-B-0357
90 *	475	650	HR 90	M-B-0359	M-B-0360
100	450	665	HR 100	M-B-0365	M-B-0366
120 *	500	810	HR 120	M-B-0368	M-B-0369
150	560	665	HR 150	M-B-0371	M-B-0372
200	560	870	HR 200	M-B-0374	M-B-0375
220 *	580	1030	HR 220	M-B-0377	M-B-0378
300	770	799	HR 300	M-B-0380	M-B-0381
400	770	997	HR 400	M-B-0383	M-B-0384

*) plastic container

HRW type half-collar holders (interchangeable type holder)



HRW type holder

Holding drums of different diameters requires the use of easily interchangeable holders. The HRW holder is based on the HR type holder and is fitted with a special holder interchanging system requiring no tool.

V (litres)	d (mm)	h(mm)	Type	Art. number galvanised	Art. number stainless steel
50	400	455	HRW 50	M-B-0456	M-B-0457
60 *	400	610	HR 50	M-B-0459	M-B-0460
90 *	475	650	HR 90	M-B-0462	M-B-0463
100	450	665	HRW 100	M-B-0465	M-B-0466
120 *	500	810	HR 120	M-B-0468	M-B-0469
150	560	665	HRW 150	M-B-0471	M-B-0472
200	560	870	HRW 200	M-B-0474	M-B-0475
220 *	580	1030	HRW 220	M-B-0477	M-B-0478
300	770	799	HRW 300	M-B-0480	M-B-0481
400	770	997	HRW 400	M-B-0483	M-B-0484

*) plastic container

SP type spanset belt holders



Open SP type holder



Closed SP type holder

The container is held on the holder by means of two spanset belts. This very price worthy holder is used when only a few daily or weekly blendings have to be carried out. The spanset belts allow a great amount of drum diameter (- 100 mm) and height (+ 30/ - 10 MM) tolerances. They have been specially developed for the type of holder and are very easy to use. Spanset belts are available for the following container sizes:

V [litres]	d [mm]	H [mm]	Type	Art. number galvanised	Art. number stainless steel
100	450	665	HRW 100	M-B-0565	M-B-0566
150	560	665	HRW 150	M-B-0571	M-B-0572
200	560	870	HRW 200	M-B-0574	M-B-0575

// ADAPTERS

Adapter for BV type container holders

Drums of different diameters and heights can be fixed on the same holder just by using a corresponding adapter. These adapters are made of polymer and can be simply stuck onto the holder.

Adapter for HR type container holders

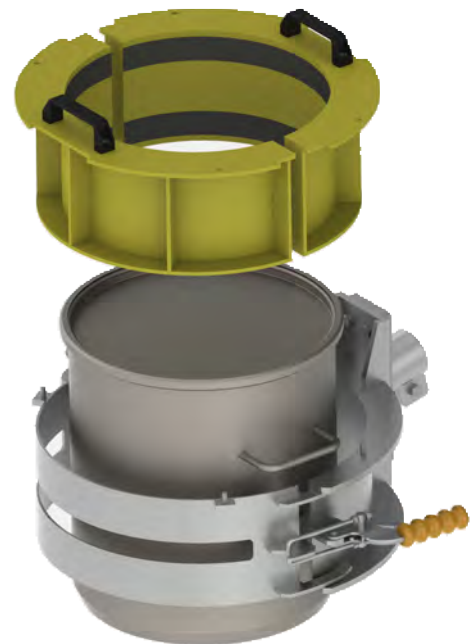
This adapter is used with HR type drum holders for small diameter containers. It is made of polymer and can be simply inserted in the holder. Securing the adapter by a star grip screw is possible if required.



Adapter for BV type holder



Adapter for HR type holder



Adapter for HR type holder

MIXOMAT B

// Drum blender 30 – 400 litres

Adapter sizes:

BV / HR type holder	Container [litres]	BV type	Art. number BV type	HR type	Art. number BV type
60	50	AD60/50BV	M-B-1510		
60	30	AD60/30BV	M-B-1514	AD60/30HR	M-B-1814
90	60	AD90/60BV	M-B-1518	AD90/60HR	M-B-1818
90	50	AD90/50BV	M-B-1522	AD90/50HR	M-B-1822
90	30	AD90/30BV	M-B-1526	AD90/30HR	M-B-1826
100	90	AD100/90BV	M-B-1530	AD100/90HR	M-B-1830
100	60	AD100/60BV	M-B-1534	AD100/60HR	M-B-1834
100	50	AD100/50BV	M-B-1538	AD100/50HR	M-B-1838
100	30	AD100/30BV	M-B-1542	AD100/30HR	M-B-1842
120	100	AD120/100BV	M-B-1546	AD120/100HR	M-B-1846
120	90	AD120/90BV	M-B-1550	AD120/90HR	M-B-1850
120	60	AD120/60BV	M-B-1554	AD120/60HR	M-B-1854
120	50	AD120/50BV	M-B-1558	AD120/50HR	M-B-1858
120	30	AD120/30BV	M-B-1562	AD120/30HR	M-B-1862
150	100	AD150/100BV	M-B-1566	AD150/100HR	M-B-1866
150	90	AD150/90BV	M-B-1570	AD150/90HR	M-B-1870
150	60	AD150/60BV	M-B-1574	AD150/60HR	M-B-1874
150	50	AD150/50BV	M-B-1578	AD150/50HR	M-B-1878
150	30	AD150/30BV	M-B-1582	AD150/30HR	M-B-1882
200	150	AD200/150BV	M-B-1586		
200	120	AD200/120BV	M-B-1590	AD200/120HR	M-B-1890
200	100	AD200/100BV	M-B-1594	AD200/100HR	M-B-1894
200	90	AD200/90BV	M-B-1598	AD200/90HR	M-B-1898
200	60	AD200/60BV	M-B-1602	AD200/60HR	M-B-1902
200	50	AD200/50BV	M-B-1606	AD200/50HR	M-B-1906
200	30	AD200/30BV	M-B-1610	AD200/30HR	M-B-1910
220	200	AD220/200BV	M-B-1614	AD220/200HR	M-B-1914
220	150	AD220/150BV	M-B-1618	AD220/150HR	M-B-1918
220	120	AD220/120BV	M-B-1622	AD220/120HR	M-B-1922
220	100	AD220/100BV	M-B-1626	AD220/100HR	M-B-1926
220	90	AD220/90BV	M-B-1630	AD220/90HR	M-B-1930
220	60	AD220/60BV	M-B-1634	AD220/60HR	M-B-1934
220	30	AD220/30BV	M-B-1638	AD220/30HR	M-B-1938
300	150	AD300/150BV	M-B-1642	AD300/150HR	M-B-1942
300	100	AD300/100BV	M-B-1646	AD300/100HR	M-B-1946
300	90	AD300/90BV	M-B-1650	AD300/90HR	M-B-1950
300	60	AD300/60BV	M-B-1654	AD300/60HR	M-B-1954
300	50	AD300/50BV	M-B-1658	AD300/50HR	M-B-1958
300	30	AD300/30BV	M-B-1662	AD300/30HR	M-B-1962
400	300	AD400/300BV	M-B-1666		
400	200	AD400/200BV	M-B-1670	AD400/200HR	M-B-1970
400	150	AD400/150BV	M-B-1674	AD400/150HR	M-B-1974
400	120	AD400/120BV	M-B-1678	AD400/120HR	M-B-1978
400	100	AD400/100BV	M-B-1682	AD400/100HR	M-B-1982
400	90	AD400/90BV	M-B-1686	AD400/90HR	M-B-1986
400	60	AD400/60BV	M-B-1690	AD400/60HR	M-B-1990
400	50	AD400/50BV	M-B-1694	AD400/50HR	M-B-1994
400	30	AD400/30BV	M-B-1698	AD400/30HR	M-B-1998

// CONTAINERS

Stainless steel container

Following **FUCHS** containers are available as a standard:

Execution: · Stainless steel St.1.4301, bright as rolled finish (St.1.4435, electrolytic polish on request)

Delivery: · Drum, cover, tension ring, silicon seal, baffle fixed under the cover (electrolytic polish for faster and better blending)



Stainless steel container

Plastic container

Execution: · Low-pressure polyethylene (LPPE), opaque, blue

Delivery: · Drum, cover (black), tension ring for tight closing, baffle fixed under the cover (electrolytic polish for faster and better blending)



Plastic container

Plastic containers



Baffle

Container sizes:

V [litres]	Material	d (mm)	h (mm)	Art. number	Corresponding baffle
30	LPPE	300	520	M-B-0045	M-B-0080
50	St.1.4301	400	455	M-B-0010	M-B-0080
60	LPPE	400	610	M-B-0050	M-B-0080
90	LPPE	475	650	M-B-0055	M-B-0082
100	St.1.4301	450	665	M-B-0015	M-B-0082
120	LPPE	500	810	M-B-0060	M-B-0082
150	St.1.4301	560	665	M-B-0020	M-B-0084
200	St.1.4301	560	870	M-B-0025	M-B-0084
220	LPPE	580	1030	M-B-0065	M-B-0084
300	St.1.4301	770	799	M-B-0030	M-B-0086
400	St.1.4301	770	997	M-B-0035	M-B-0086

// CONTROL UNIT

Control unit integrated in the practical blender hood, which can be easily swung open. Control unit with main and start switch, analogue multifunction timer with 16 time ranges from 1 second to 500 hours (blending is normally carried out in 2 to 10 minutes).

Options:

Description	Art. number
Digital timer	M-0-1020
Adjustable speed (potentiometer with graduation from 1 to 10)	M-0-1030
Adjustable speed (potentiometer and digital frequency display)	M-0-1040
Container positioning switch "Left/right"	M-0-1050

// SAFETY DEVICES

To prevent accidents **FUCHS** advises its customers to install safety devices such as metal or photoelectric barriers equipped with safety switches to be connected to the control unit by means of two terminals (only one being used with the one-sided blender).

Protection cages may also be supplied by **FUCHS**. Following standard executions are available and principally consist of a rectangular tube construction in lacquered steel (RAL 6017) or in stainless steel and of plexiglas plankings. Two wing doors give access to the blending containers and a limit switch prevent from blending with open doors. Following executions are available:



SB1CS type protection cage

Housing	Size (lxwxh) [mm]	Lacquered type	Art. number lacquered	Stainless steel type	Art. number stainless steel
B1	880x1280x2030	SB1CS	M-B1-0110	SB1SS	M-B1-0115
B2	1030x1560x2030	SB2CS	M-B2-0110	SB2SS	M-B2-0115
B3	1230x1630x2030	SB3CS	M-B3-0110	SB3SS	M-B3-0115



FUCHS Maschinen AG

Englisberg 17
CH-1763 Granges-Paccot, Schweiz

Telefon +41 26 510 10 00
Fax +41 26 510 10 09
info@fuchsag.com

www.fuchsag.com

SERVOLIFT Experts in Process, Handling & Design
SERVOLIFT
35 Righter Road
Randolph, NJ 07869
Ph: 973-442-7878 - www.servo-lift.com